

## Circularre

von sämtlichen f. Güternverwaltungen und Lieferhaltung  
exclusive Vaduz.

Mit Bezug auf Sub Circularre vom 21. April 1859 N<sup>o</sup> 3906 wird be-  
kannt gegeben, daß Ihre Durchlaucht der Fürst Luitpold von Bayern  
Ministerial-Consulent G. D. Smalbones' ferner hiesigen Vorstand in den  
f. Provinz zu vertreten gemüßten.

Wien am 23. September 1860

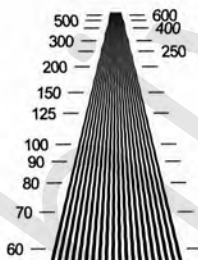
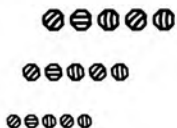
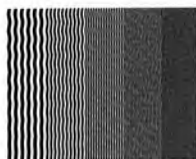
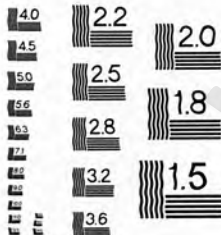
Ad Mandatum



Kodak Digital Science Imaging Test Chart TL-5003



© 1995, Eastman Kodak Company, All Rights Reserved Rev 2.0



ABCDEFGHIJKLMN OPQRSTUVWXYZ  
abcdefghijklmnopqrstu vwxyz  
1234567890 Modern

ABCDEFGHIJKLMN OPQRSTUVWXYZ  
abcdefghijklmnopqrstu vwxyz  
1234567890 Courier New

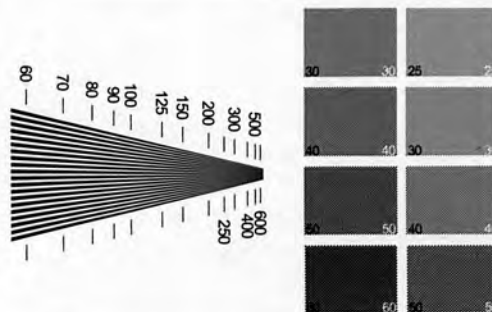
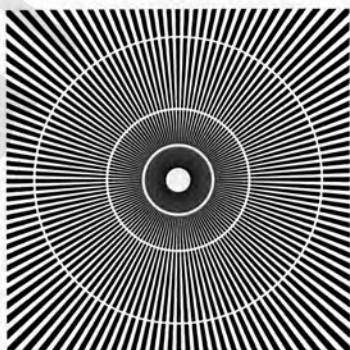
ABCDEFGHIJKLMN OPQRSTUVWXYZ  
abcdefghijklmnopqrstu vwxyz  
1234567890 Times Roman 6pt

ABCDEFGHIJKLMN OPQRSTUVWXYZ  
abcdefghijklmnopqrstu vwxyz  
1234567890 Times Roman 4pt

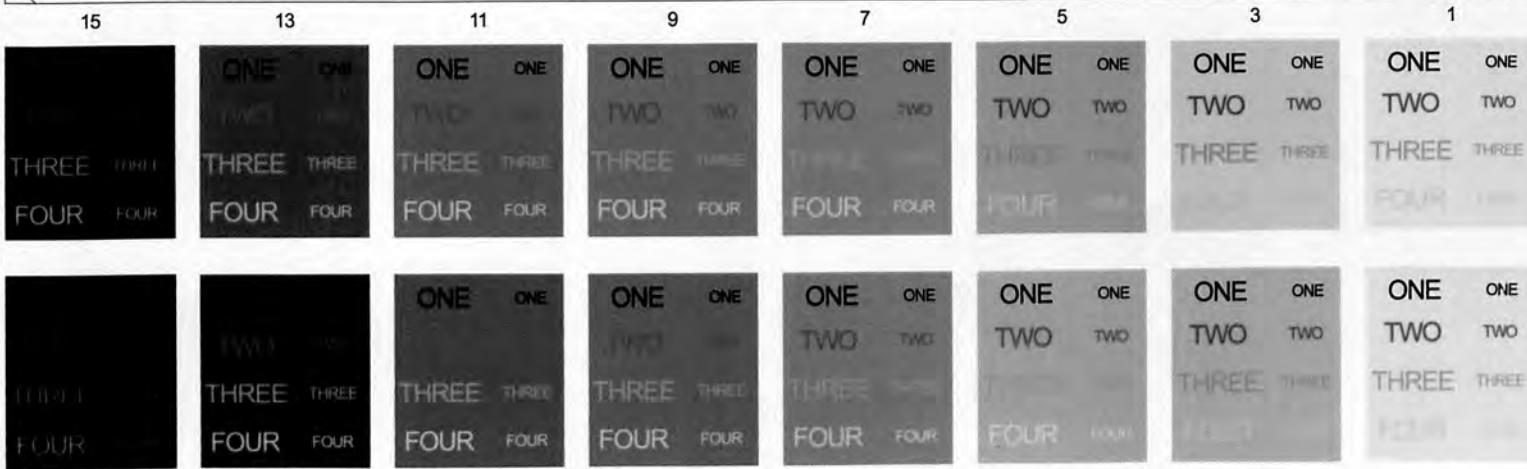
ABCDEFGHIJKLMN OPQRSTUVWXYZ  
abcdefghijklmnopqrstu vwxyz  
1234567890 Times Roman 8pt

ABCDEFGHIJKLMN OPQRSTUVWXYZ  
abcdefghijklmnopqrstu vwxyz  
1234567890 Times Roman 10pt

ABCDEFGHIJKLMN OPQRSTUVWXYZ  
abcdefghijklmnopqrstu vwxyz  
1234567890 Times Roman 12pt



MANUFACTURED BY: APPLIED IMAGE Inc 1653 East Main Street Rochester, NY 14609 USA Voice: (585) 482-0000 Fax: (585) 288-5989 www.appliedimage.com



15 13 11 9 7 5 3 1 16 14 12 10 8 6 4 2

**ENDE**